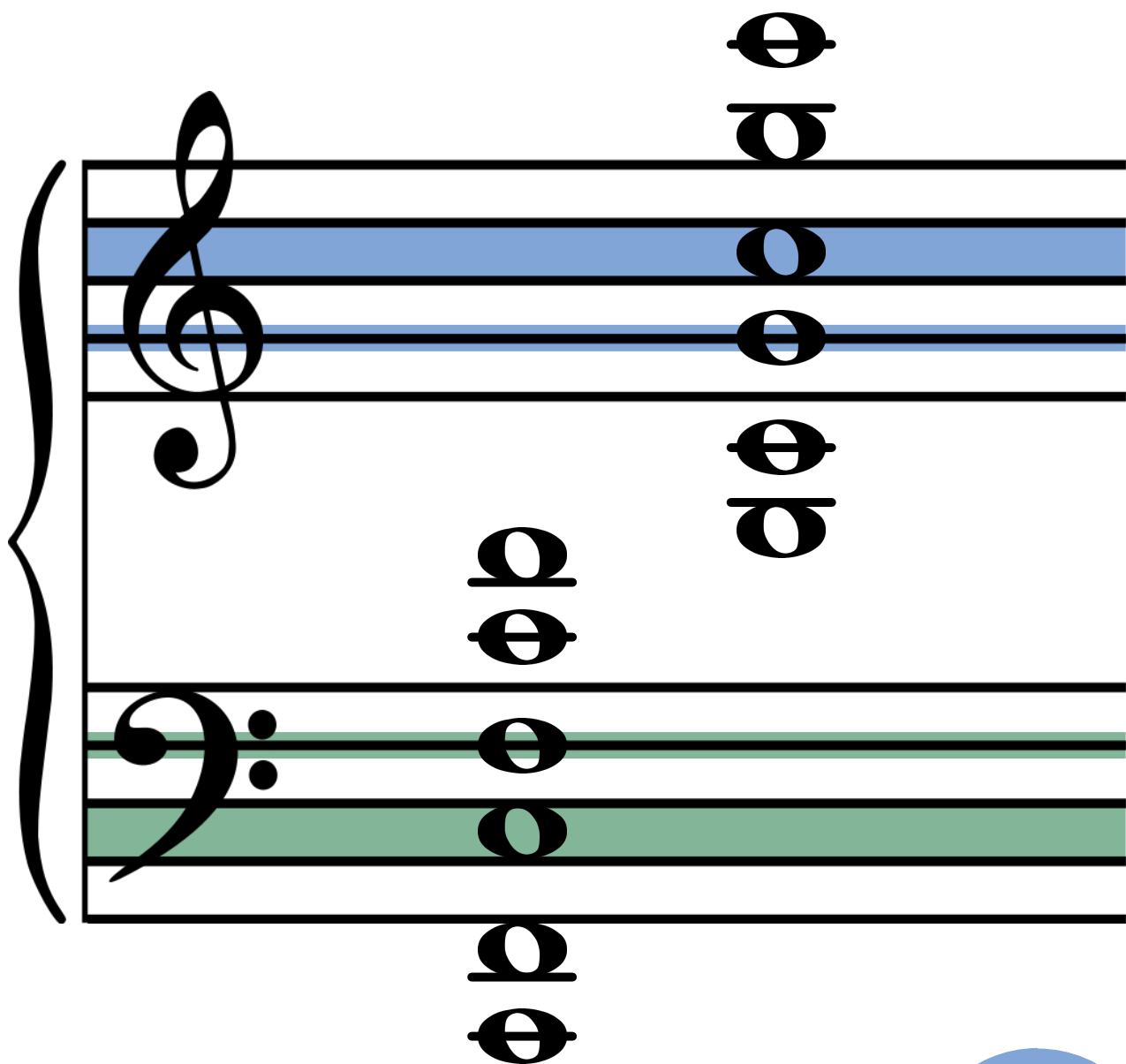


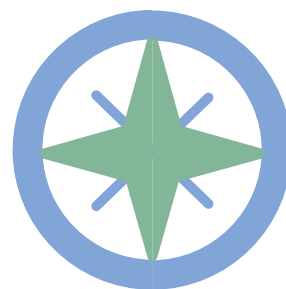
LANDMARK NOTES



LANDMARK NOTES

The diagram illustrates six landmark notes on a grand staff. The notes are represented by pairs of circles, one above and one below a horizontal line, indicating their position relative to the staff lines. The notes are labeled as follows:

- "High" G/C: Located on the top line of the treble clef staff.
- "Treble" G/C: Located on the second line from the top of the treble clef staff.
- "Middle" G/C: Located on the middle line of the treble clef staff.
- "Middle" C/F: Located on the middle line of the bass clef staff.
- "Bass" C/F: Located on the second line from the bottom of the bass clef staff.
- "Low" C/F: Located on the bottom line of the bass clef staff.



LANDMARK NOTES

The diagram illustrates landmark notes on a piano keyboard using a musical staff with treble and bass clefs. The notes are represented by black circles with stems, and the corresponding piano keys are highlighted in blue and green.

- Treble Clef (Right Hand):**
 - C's:** Middle C (C4) is located on the first line (E4). The piano key is highlighted in light blue.
 - G's:** G4 is located on the second space (F#4). The piano key is highlighted in medium blue.
- Bass Clef (Left Hand):**
 - F's:** F3 is located on the first space (E3). The piano key is highlighted in light green.
 - C's:** C3 is located on the second space (B2). The piano key is highlighted in medium green.

Labels for the notes are placed around the staff: C's above the first line, G's to the right of the second space, F's below the first space, and C's below the second space.

