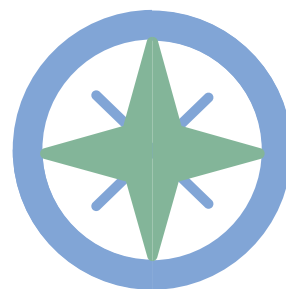
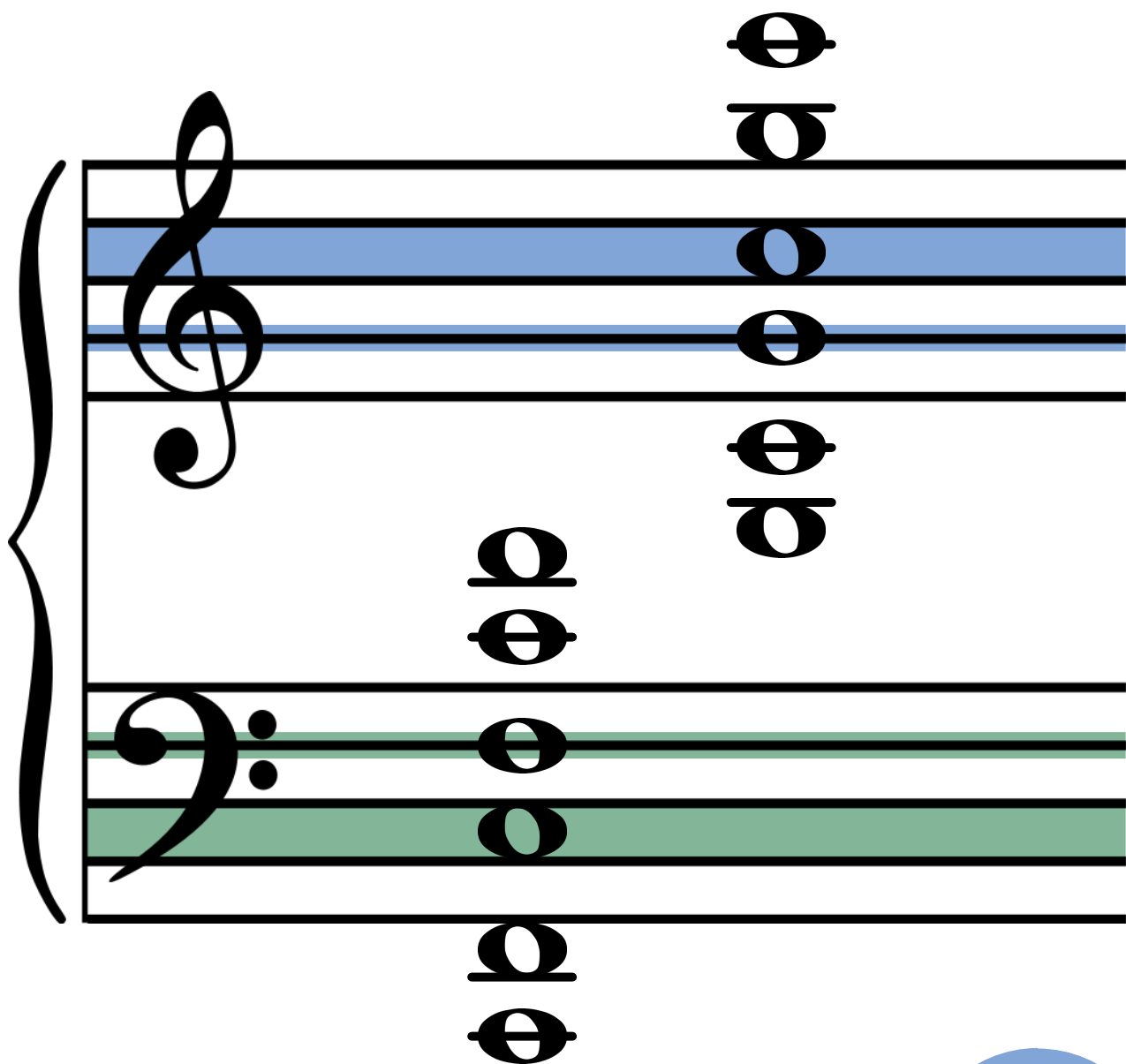


LANDMARK NOTES



LANDMARK NOTES

The diagram illustrates landmark notes on a grand staff. The treble clef is on the left, and the bass clef is on the right. The staff is divided into three horizontal regions: a light blue region for the upper treble, a light green region for the lower bass, and a white region for the middle. Landmark notes are marked with circles and lines:

- C's**: Located on the top line of the treble clef.
- G's**: Located on the second line of the treble clef.
- F's**: Located on the first line of the bass clef.
- C's**: Located on the first space of the bass clef.

Additional notes are shown on the middle lines of both clefs, with lines above and below them, indicating their relative positions to the landmark notes.

